



diffjustdiff.com



diffjustdiff

urban engitecture

engineering +
urban planning +
architecture +

**Sustainability
Paradigm**

diffjustdiff.com

Before

Before it becomes a reality, it is a project; *Before*, a thought; *Before*, an idea; *Before*, a possibility; *Before*, a hunch; *Before*, a chance; *Before*, it is a reality.

(big) QUESTION(S) & (short) ANSWER(S) about our urban environments



POLLUTION - EFFICIENCY - LIVING
CONDITIONS - STRUCTURAL STABILITY
- SECURITY - TRANSPORTATION -
MOBILITY - EMERGENCY ESCAPE
OPTIONS - FREE GROUND LEVEL -
PUBLIC SPACE - LIGHTNING,
VENTILATION AND SIGHT CONDITIONS -
COMMUNITY FEELING -

Do you think building more humane and ecologic Urban environments would be possible?

diffjustdiff | urban engitecture [engineering + urban planning + architecture]

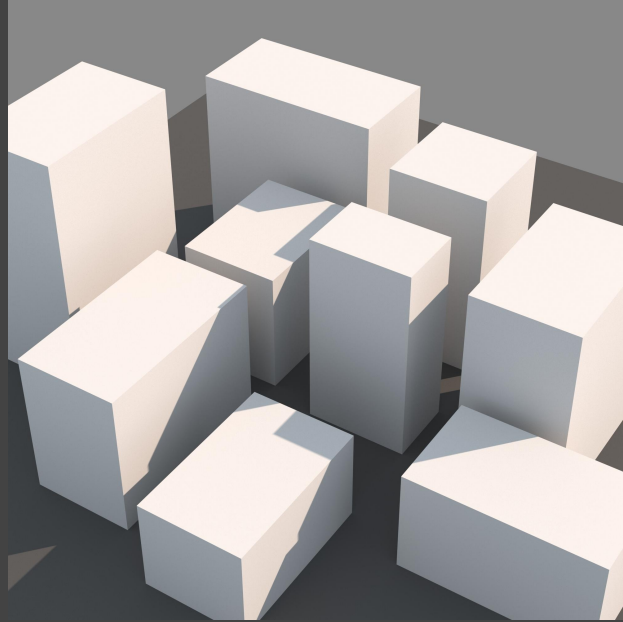


diffjustdiff explores the actual possibilities in architecture and urban planning starting from simple issues such as building another type of city, drastically reducing pollution while improving living standards, guaranteeing structural stability despite considerable heights in high-rise building, fostering transportation and mobility at different heights, offering multiple escape alternatives in emergency cases, freeing the ground level for its use as public space, having good lightning, ventilation and sight qualities for everyone, generating community feeling. In brief:

- improving structural stability
- safety
- free ground-level
- green mobility (easy, economic, ecological)
- more and better urban public-spaces
- better and wider architectural living-conditions
- social/community feeling/belonging
- improving life quality standards

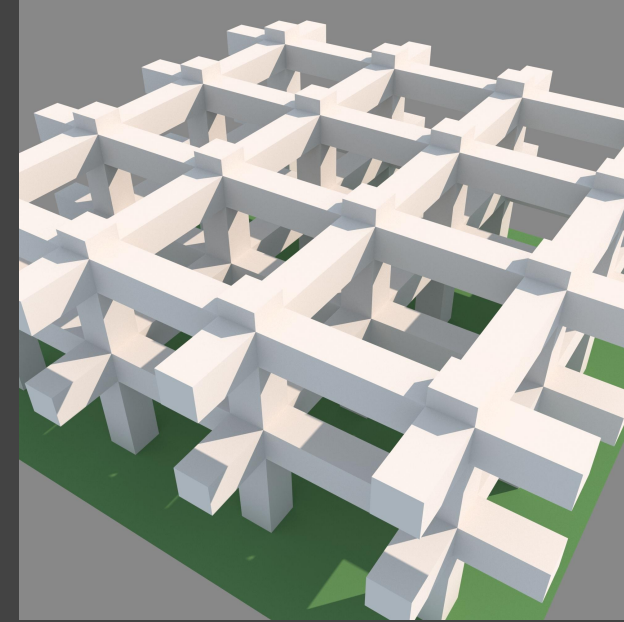
... all of these always with the idea of modularity and prefabrication in mind

diffjustdiff | urban engitecture [engineering + urban planning + architecture]



Conventional construction characteristics:

- Higher slenderness (long structures vibration periods)
- Horizontal actions low resistance (earthquakes, wind)
- Only downwards emergency escape exit option
- Ground level obstacles (limited public space)
- Intercommunication exclusively at ground level
- Constrained public spaces
- Low social/community feeling/belonging
- Low living conditions quality standards
- Low topography adaptability



Macro-structures characteristics:

- Low slenderness (short structure vibration periods)
- Horizontal actions high resistance (earthquakes, wind)
- Multiple emergency escape exit options (downwards + sideways + upwards)
- Free ground level (obstacles free public space)
- Intercommunication at different heights
- Wide public spaces
- High social/community feeling/belonging
- High living conditions quality standards
- High topography adaptability

Solutions for the future (and for the present)

macro-cities

_diffjustdiff basic (disruptive) idea is that buildings are obstacles that condition, limit and hinder us: both mobility in general and the quality of public spaces are directly affected by them in a very negative and permanent way. The solution we propose is to free the ground level by elevation. This simple idea also provides another series of additional advantages of great importance with respect to security, stability and quality of life conditions in general.

Macro-structures are conceived to be an espacial framework where to fit all of our necessities, something like an architectural operating system. This concept may also help building the idea of 'modular prefabricated cities' by growth patterns both horizontal and vertical.



Would building another type of city be possible?

Yes!, by joining Engineering, Urban Planning and Architecture together to build Macro-cities.



Macro-cities try to join engineering, urban planning and architecture together, what can drastically improve the quality of our urban environments.

Would reducing pollution drastically while improving living conditions be possible?

Yes!, by building more efficient geometric Urban environments.



Macro-cities are meant to follow a concrete and specific three dimensional geometric patterns, what can help us improving communication, transportation, mobility, structural stability, security, public space and general living conditions.

Would offering multiple escape alternatives in emergency cases be possible?

Yes!, macro-structures´ horizontal communications at different heights also allow multiple escape options.



Macro-structures have the possibility of horizontal communication at different heights. This facilitates multiple escape options in case of emergencies, offering downwards, sideways and even upwards evacuation paths.

Would guarantying structural stability despite high-rise building be possible?

Yes!, macro-structures reduce slenderness drastically, what means much more stability and security.



Macro-cities conform a global structural unit that behave like low-rise buildings despite being very high constructions. Macro-structures have short vibration periods (around 1 second) what indicates that they are much more stable and secure than conventional high-rise buildings.

Would freeing the ground level for its use as public space be possible?

Yes!, macro-structures may have distant support points, which allows an almost full release of the ground level.



Macro-cities may have distant support points what allows an almost full release of the ground level for it use as public space. Additionally we may have more public spaces at different heights.

Would having good lightning, ventilation and sight qualities for all be possible?

Yes!, at the same time, macro-structures may offer good quality for lightning, ventilation and sight conditions.



Macro-cities may also offer better quality for lightning, ventilation and sight (far views) conditions for all.

Would generating community feeling be possible?

Yes!, another good point of macro-structures consequences.



Macro-cities also can provide a sense of unity what could make a community feeling to be shared.

